

Company: The Port of Morrow
 Name: Jacob K Cain
 Date: 11/22/2019

x2

1- VFD
 1- Soft Start



Pump:

Size: 6HH
 Type: Clear Liquids
 Synch speed: 1800 rpm
 Curve: 6HH18
 Specific Speeds:
 Dimensions:
 Speed: 1785 rpm
 Dia: 16.4375 in
 Impeller:
 Ns: 1568
 Nss: ---
 Suction: 8 in
 Discharge: 6 in

Search Criteria:

Flow: 2400 US gpm Head: 260 ft

Fluid:

Water
 Density: 62.32 lb/ft³
 Viscosity: 0.9946 cP
 NPSHa: ---
 Temperature: 68 °F
 Vapor pressure: 0.3391 psi a
 Atm pressure: 14.7 psi a

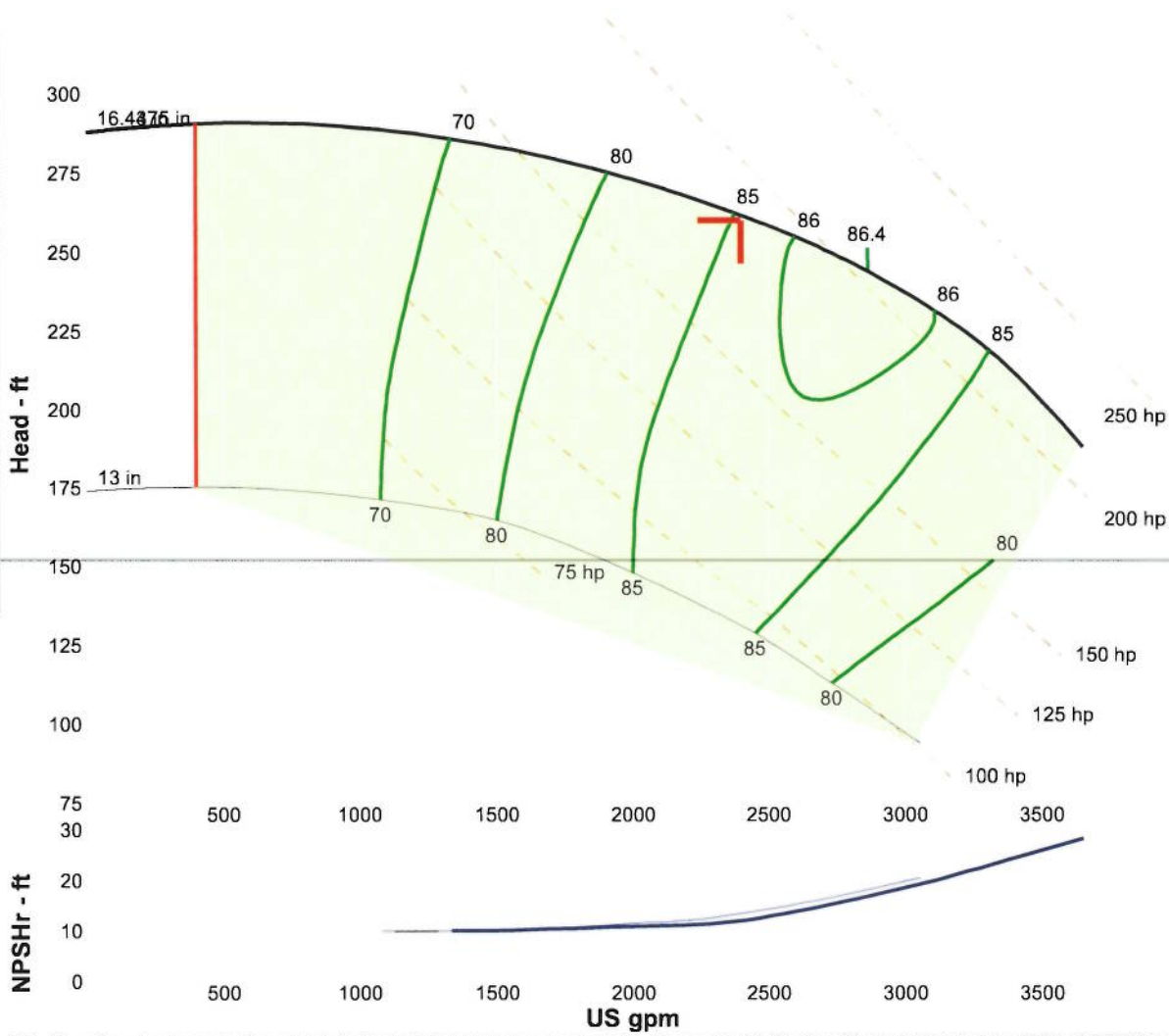
Motor:

Standard: NEMA
 Enclosure: TEFC
 Sizing criteria: Max Power on Design Curve
 Size: 250 hp ★
 Speed: 1800
 Frame: 447T ★

Pump Limits:

Temperature: 250 °F
 Pressure: 155 psi g
 Sphere size: 1.22 in
 Power: ---
 Eye area: ---

---- Data Point ----	
Flow:	2400 US gpm ★
Head:	262 ft ★
Eff:	85% ★
Power:	186 hp
NPSHr:	12.1 ft
---- Design Curve ----	
Shutoff head:	288 ft
Shutoff dP:	125 psi
Min flow:	400 US gpm
BEP:	86% @ 2864 US gpm
NOL power:	215 hp @ 3307 US gpm
-- Max Curve --	
Max power:	215 hp @ 3308 US gpm



Min flow line represents the absolute lowest flow pump can operate. Consult with factory if operating below 50% of BEP flow

Performance Evaluation:

Flow US gpm	Speed rpm	Head ft	Efficiency %	Power hp	NPSHr ft
2880	1785	243	86	205	17.2
2400	1785	262	85	186	12.1
1920	1785	275	80	166	10.8
1440	1785	284	72	143	10.1
960	1785	286	64	119	9.48